

Vertex® Sales Tax RateLocator™

There *is* an easy way to obtain U.S. and Canadian sales and use tax rate information. Its called the Vertex Sales Tax RateLocator.

Isn't searching for accurate, up-to-date sales and use tax rate information for multiple jurisdictions just plain...well, a nuisance?

If you've been looking for an easy way to locate sales and use tax rate information for the U.S. and Canada, Vertex Sales Tax RateLocator will become your tax lifeline.

The Solution

Vertex Sales Tax RateLocator is desktop software that provides all U.S. and Canadian sales, use and rental tax rates at the component part level, and it also includes a combined rate. Additionally, it includes taxability charts and state contact information, and provides special rules at the jurisdictional level, as well as non-standard and special tax rates.

Features

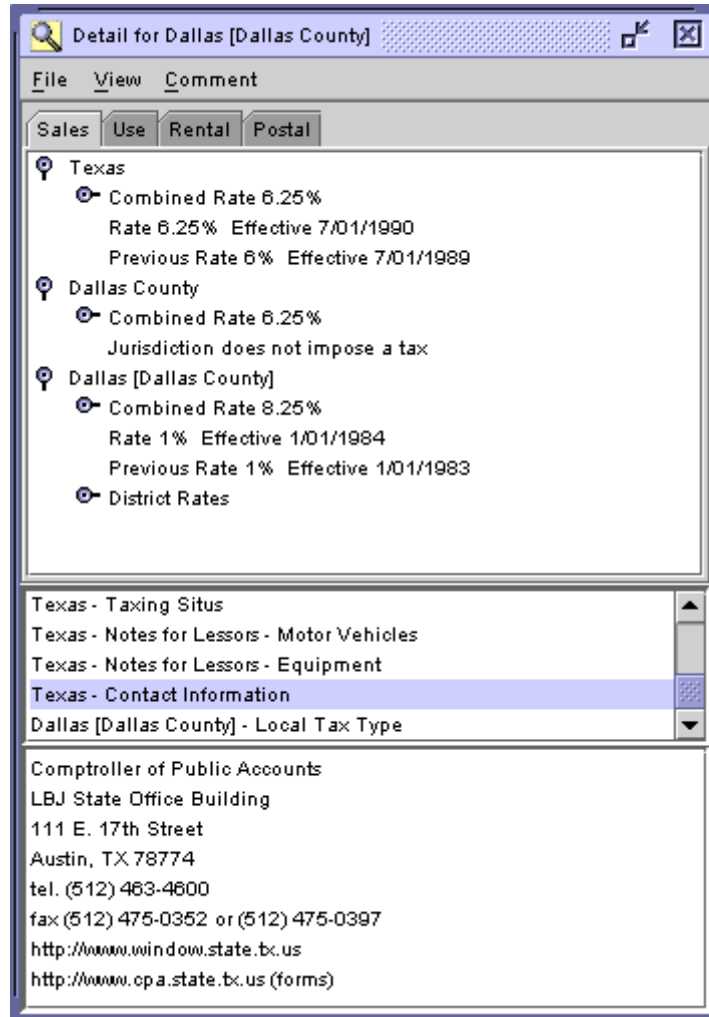
Vertex Sales Tax RateLocator offers an extremely intuitive interface so you can quickly find the information you need. You can search using three different methods; by name, jurisdiction, or postal code, whether you're searching for U.S. or Canadian information. Vertex Sales Tax RateLocator also allows for a historical lookup so you can quickly jump to frequently researched jurisdictions.



And here's the best part - its so easy. A CD-ROM will be mailed to you each month with updated files.

Unparalleled Research

So, how does Vertex provide such a comprehensive, up-to-date software program containing such vast amounts of dynamic data? Vertex has a large dedicated team of in-house research professionals that are in constant contact with over 7,800 state and local taxing jurisdictions.



Too Good to be True

Will you really spend less time looking up rate information and have more time to focus on the other aspects of your job? Absolutely. Or maybe you'll just get out of the office earlier. Either way, what more could you ask for? It's the most accurate, up-to-date and easy to use software solution available on the market today for U.S. and Canadian sales tax rates.